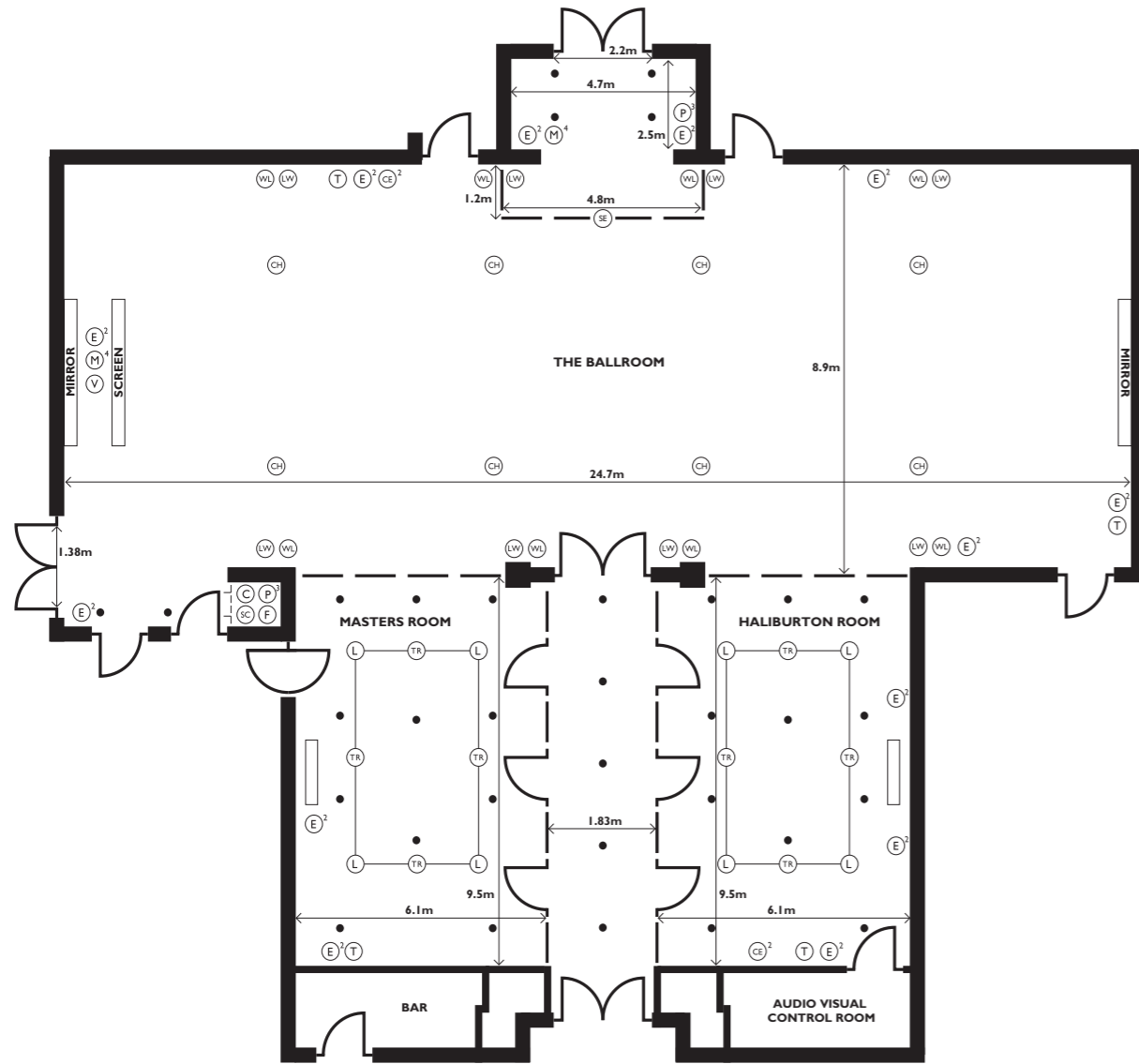


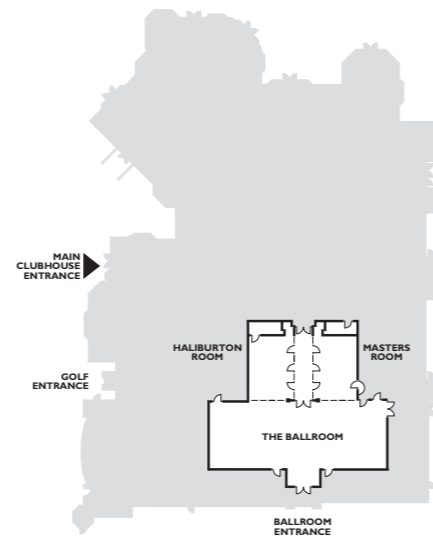
THE BALLROOM, MASTERS ROOM AND HALIBURTON ROOM



WENTWORTH CLUB  
**PRIVATE FUNCTION ROOMS**  
 THE BALLROOM, MASTERS ROOM AND HALIBURTON ROOM

KEY

- (F) Lighting control
- Ceiling downlighters on dimmer control
- (CH) Chandeliers
- (WL) Wall lights
- (TR) Track lighting
- (E<sup>2</sup>) 13amp twin electric
- (CE<sup>2</sup>) 13amp twin electric socket clean supply
- (SC) Screen control
- (T) Outside BT line
- (LW) Wall speakers
- (L) Ceiling speakers
- (C) Curtain control
- (P<sup>3</sup>) 3 phase 63 amp power
- (M<sup>4</sup>) 4 microphone inputs
- (SE) Stage extension



Wentworth Club  
 Wentworth Drive  
 Virginia Water  
 Surrey GU25 4LS  
 Telephone 01344 842201  
 Fax 01344 842804  
 www.wentworthclub.com



**THE BALLROOM, MASTERS ROOM AND HALIBURTON ROOM**

	<b>THE BALLROOM</b>	<b>MASTERS ROOM</b>	<b>HALIBURTON ROOM</b>	<b>THE BALLROOM, MASTERS ROOM AND HALIBURTON ROOM</b>	<b>MASTERS ROOM AND HALIBURTON ROOM</b>
<b>CEILING HEIGHT</b>	6.1m	3.15m	3.15m	-	-
<b>CAPACITY</b>					
<i>Reception</i>	250	-	-	350	120
<i>Banquet</i>	140	30	30	300	80
<i>Dinner Dance</i>	120	-	-	270	60
<i>Boardroom</i>	50	24	24	-	30
<i>Hollow square</i>	60	28	28	-	40
<i>U shape</i>	54	24	24	-	35
<i>Cabaret</i>	80	20	20	-	40
<i>Classroom</i>	120	18	18	-	36
<i>Theatre</i>	220	50	50	-	120
<b>LIGHTING</b>					
<i>Chandeliers</i>	8	2	2	14	6
<i>Spot lights</i>	27	8	8	43	16
<i>Wall lights</i>	8	-	-	8	-
<i>Stage lamps</i>	4	-	-	4	-
<i>Down lights on dimmer control</i>	yes	yes	yes	yes	yes
<i>Controls via remote handset</i>	yes	yes	yes	yes	yes
<i>Circuits with section control</i>	yes	yes	yes	yes	yes
<b>AUDIO VISUAL</b>					
<i>3000w amplifiers</i>	yes	yes	yes	yes	yes
<i>200/50w speakers</i>	yes	yes	yes	yes	yes
<i>Microphone</i>	yes	yes	yes	yes	yes
<i>Microphone line inputs</i>	yes	yes	yes	yes	yes
<i>Relay sound to other rooms</i>	yes	yes	yes	yes	yes
<i>Controls via remote handset</i>	yes	yes	yes	yes	yes
<i>Electrically operated screen</i>	yes	yes	yes	yes	yes
<i>Mobile LCD projector</i>	yes	yes	yes	yes	yes
<i>Mobile 42" LCD monitors</i>	yes	yes	yes	yes	yes
<i>Mobile DVD player</i>	yes	yes	yes	yes	yes
<i>Video record and playback facilities</i>	yes	yes	yes	yes	yes
<i>5 disc CD player</i>	yes	yes	yes	yes	yes
<i>BT Openzone wireless broadband</i>	yes	yes	yes	yes	yes
<i>Satellite channels</i>	yes	yes	yes	yes	yes
<b>MISCELLANEOUS</b>					
<i>Air contitioning</i>	yes	yes	yes	yes	yes
<i>Sound proof partition totally hidden when not in use</i>	yes	yes	yes	yes	yes
<i>Sprung dance floor available in sections or as whole</i>	yes	yes	yes	yes	yes